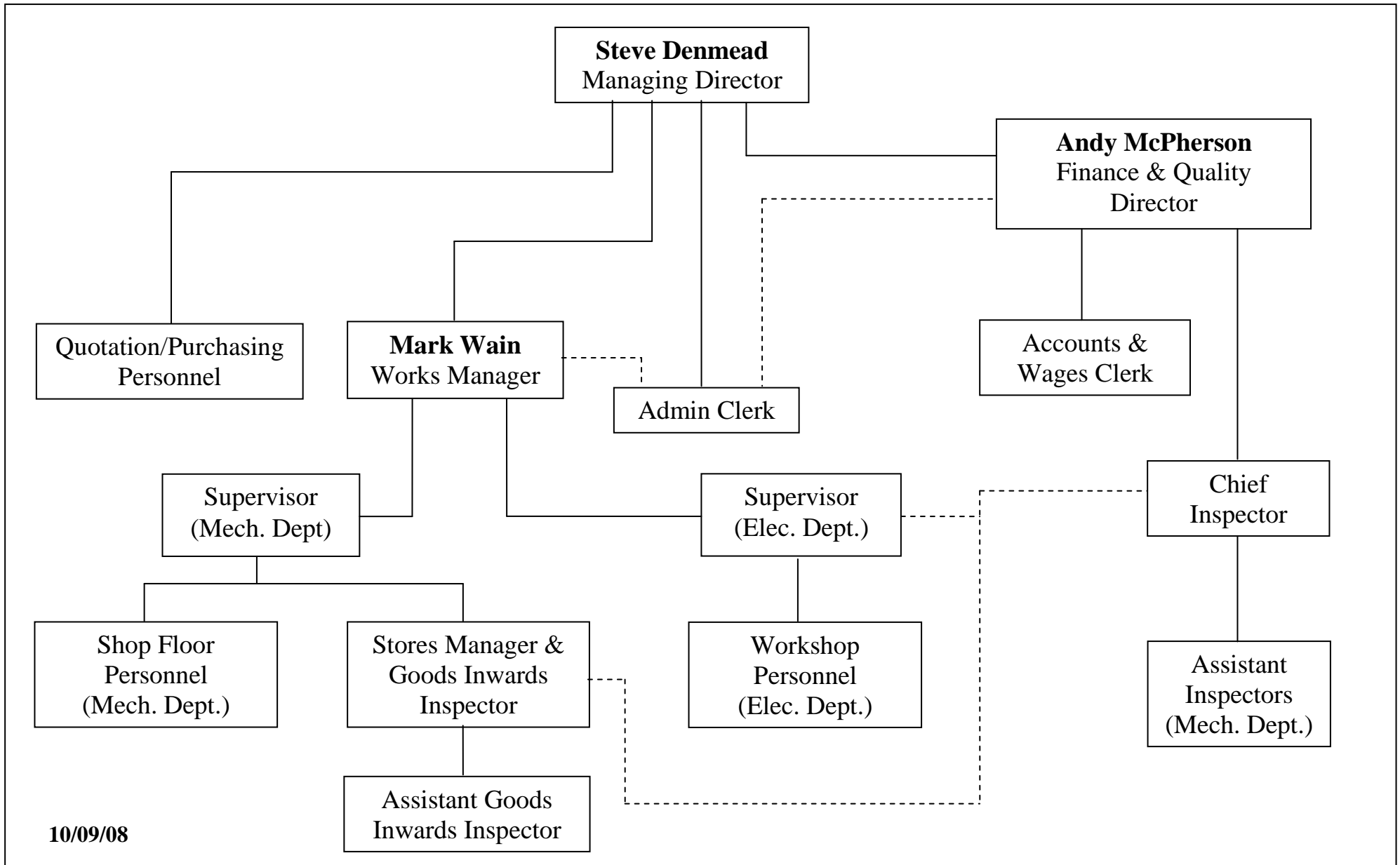




ORGANISATION CHART



10/09/08



ORGANISATION CHART

TITLE	REPORTING TO	PERSONNEL	RESPONSIBILITIES
Managing Director	N/A	Steve Denmead	New business, customer contact, quotation (mech.), purchasing, contract review, health and safety.
Quotation/Purchasing Personnel	Managing Director	Alan Pettengale	Quotation (elec.), planning (elec.), purchasing (elec.)
		Mike Samuels	Quotation (mech.)
		Jon Pearce	Purchasing
Admin Clerk	Managing Director	Rachel Humphreys	Main office administration, telephone & reception duties, delivery & invoice documentation, customer order processing.
Finance & Quality Director	Managing Director	Andy McPherson	Company financial management, management accounts, all quality issues (policy, system, product, internal auditing, ISO & customer approvals), business improvement.
Accounts & Wages Clerk	Finance Director	Sharon Rose	Sales & purchase ledgers, wages, personnel records, internal quality audits.
Chief Inspector	Quality Director	Gary Sinkins	Product quality, stage & final inspection (mech.), calibration.
Assistant Inspectors (Mech. Dept.)	Chief Inspector	Kevin Stevens	First off & stage inspection (mech.).
		Mike Samuels	First off, stage & final inspection (mech.).
Works Manager	Managing Director	MarkWain	Production, planning (mech.), customer progress updates, overall supervision, discipline & personnel management.
Supervisor (Mech. Dept.)	Works Manager	Jon Drake	Shop floor supervision (mech.), planning board and job allocation (mech.), customer updates, production work.
Shop Floor Personnel (Mech. Dept.)	Supervisor (Mech. Dept.)	Various	Production work, personal quality, personal health & safety.
Supervisor (Elec. Dept.)	Works Manager	Richard Cornish	Shop floor supervision (elec.), planning board & job allocation (elec.), purchasing (elec.), inspection (elec.), production work.
Shop Floor Personnel (Elec. Dept.)	Supervisor (Elec. Dept.)	Various	Production work, personal quality, personal health & safety.
Stores Manager & Goods Inwards Inspector	Supervisor (mech. Dept.)	Jon Pearce	Stores & stock management, goods inwards inspection.
Assistant Goods Inwards Inspector	Goods Inwards Inspector	Jeff Wilkins	Goods inwards inspection.